

**SpeedStream® 5251/5260
DSL LAN Modem**



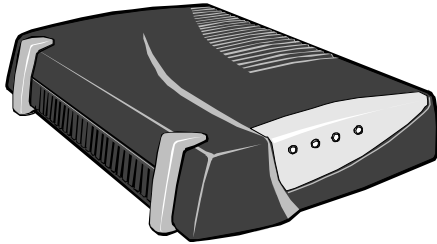
Quick-Start Guide



007-0066-002

Before you begin:

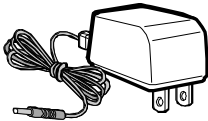
Verify that the following items came with your DSL kit:



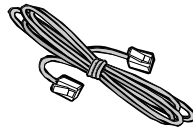
5251 or 5260 Modem



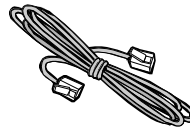
Documentation



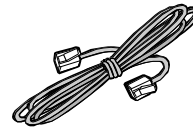
Power supply



R-11 DSL cable

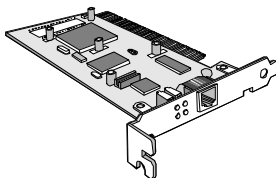


RJ-45 Ethernet cable
straight-through



RJ-45 crossover
(Xover) Ethernet cable

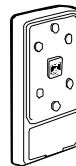
Your service provider may include a wall-mount filter, two-to-one adapter(s), line filter(s), and an Ethernet adapter in your DSL kit. If you received any of these items, follow the instructions provided in this guide for basic installation. If you need further assistance installing these items, please contact your service provider.



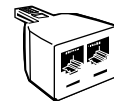
PCI Ethernet adapter



Line filter(s)



Wall-mount line filter



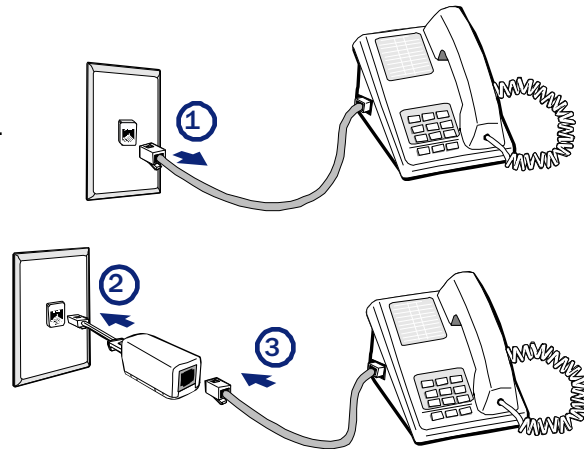
Two-to-one adapter(s)

Step 1 *Install Line Filters*

Stand-alone Line Filter

For each device that shares the DSL phone number:

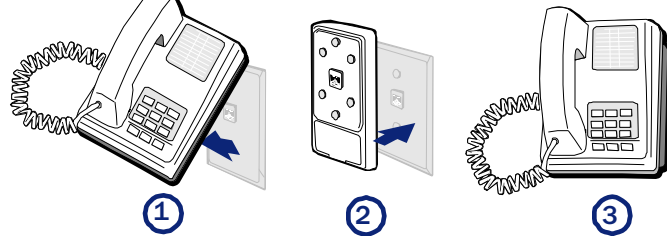
1. Unplug the device's cord from the phone jack.
2. Plug the filter into the phone jack.
3. Plug the phone cord (or other device cord) into the filter.



Wall Mount Filter

For a wall mount phone, install a wall mount filter:

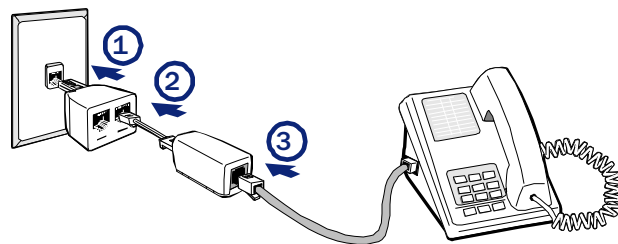
1. Remove the phone.
2. Connect the wall mount filter to the wall plate.
3. Reconnect the phone.



Two-to-One Adapter

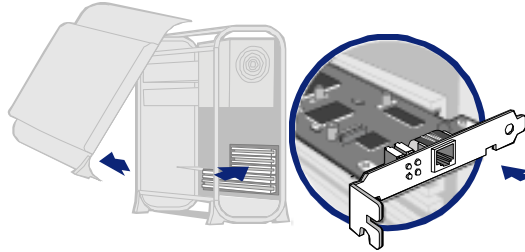
If your DSL modem and another device will share the same phone jack, install a two-to-one adapter:

1. Plug adapter into the phone jack.
2. Plug a line filter into one of the sockets of the two-to-one adapter. The other socket will be used to connect the DSL cable.
3. Plug the telephone (or other device) cord into the line filter.



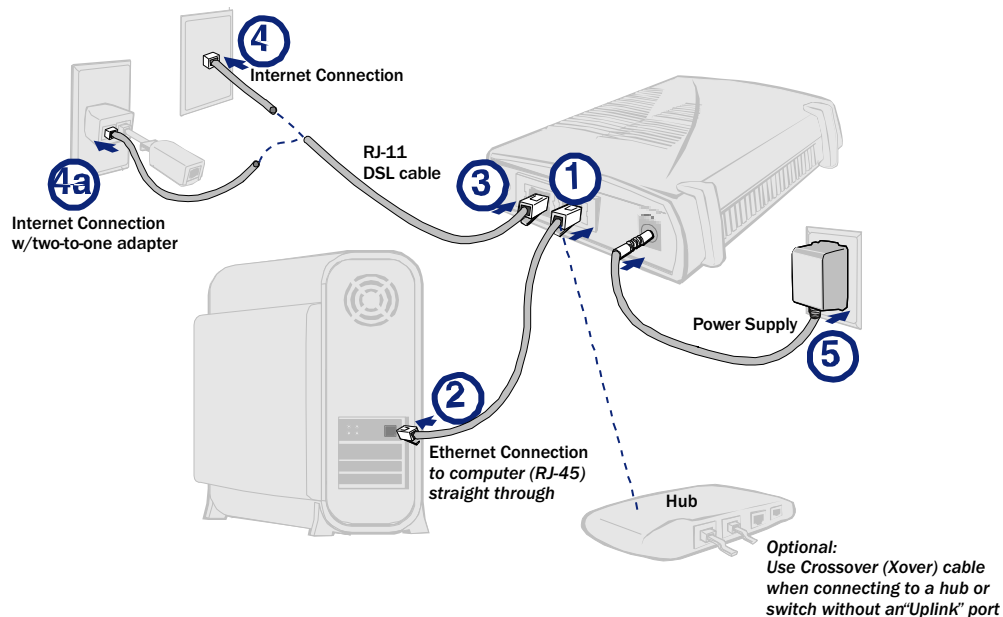
Step 2 Install the Ethernet Adapter

You will need to install an Ethernet adapter if your computer does not already have one installed. Refer to your Ethernet adapter manufacturer's documentation for complete installation instructions.



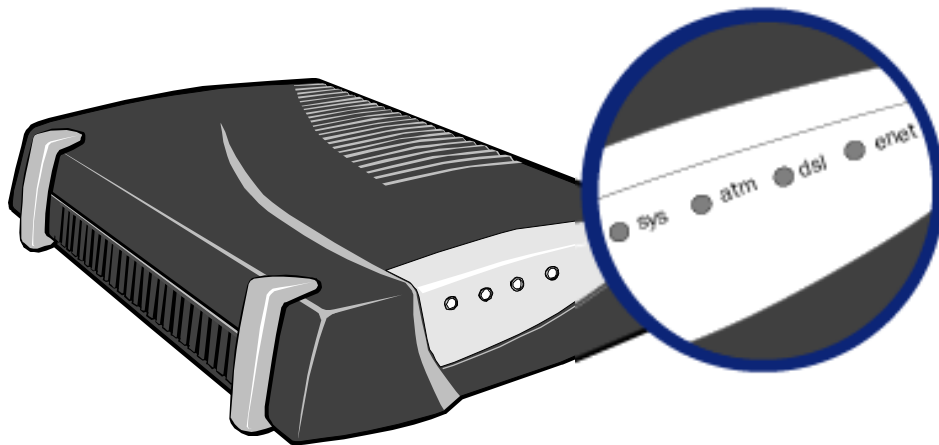
Step 3 Connect the DSL Modem

1. With your computer off, connect the Ethernet Cable to the Ethernet port on the modem.
2. Connect the other end of the Ethernet cable to the Ethernet port on your computer.
3. Plug the DSL cable into the DSL port on the modem.
4. Plug the other end of the DSL cable into the phone jack.
- 4a. If using a two-to-one adapter, plug the cable into the open socket.
5. Plug the power adapter into the power outlet and modem.



Step 4 Connect to the Internet

Congratulations, you have successfully completed the installation of your SpeedStream LAN modem. There is no modem software installation required. Simply power on the modem and the computer. Refer to your Internet Service provider's instructions for installing their software and/or connecting to the Internet.



Trouble Shooting				
LEDs	sys	atm	dsl	enet
Unlit ●	Power off	Power off; ATM not ready	Power off; power on self-test (POST) in progress	Power off. No Ethernet link detected, check cable connection
Red ●	POST error occurred; call customer support to report problem	ATM failure; call customer support to report problem	DSL error; LAN modem not configured correctly	POST error occurred; call customer support to report problem
Yellow ●	POST in progress	N/A	Solid: Line not ready BlinkingGreen/Yellow: Searching for signal	N/A
Green ●	Normal system operation	Solid: ATM ready (occurs after dsl goes solid green) Blinking: ATM traffic flow	Solid: Ready for data traffic Blinking: Line not ready	Solid: Ethernet ready Blinking: Ethernet traffic flow

For more information about Efficient Networks visit our website:
www.efficient.com

5251 Specifications	
Size:	5.56" W x 7.3" D x 1.75" H (14.12cm W x 18.54cm D x 4.44cm H)
Weight:	0.8 lb. Bridge only (0.36 kg)
Power:	Wall-mount 6 or 12 watt AC to DC adapter. 12vDC @ 0.5 amp max output. AC input to meet country-specific input requirements. - USA: 115 Vac, 60 Hz, 0.2 amp max - Europe: 220 Vac, 50 Hz, 0.1 amp max - Other: 230 Vac, 60 Hz, 0.1 amp max
Temperature:	Operating: 0 to 40 degrees C Non-operating, storage: -10 to 85 degrees C
Humidity:	10 to 90% noncondensing
Ethernet Interface	
Cabling:	Unshielded Twisted Pair (UTP) Category 3, 4, or 5 (IEEE 802.3 Standard Compliant)
Connector:	Eight-contact, shielded RJ45
DSL Interface	
Connector:	Two-contact, shielded RJ45 (pins 4 and 5) isolation per IEC 950. (Consult Efficient Networks for alternate available pinouts)
Operating distance:	18,000 feet max. at 192KB on standard 26 AWG copper pair wire (varies by data transmission rate)
5251 Configuration Settings	
ATM Interface:	<ul style="list-style-type: none"> - One Permanent Virtual Circuit supported VPI=0, VCI=38 - F4/F5 loopback cells supported - Multiprotocol over ATM AAL5 (MPOA) per RFC 2684 Multiprotocol encapsulation over ATM Adapter Layer 5 - Logical Link Control (LLC)/Subnetwork Access Protocol (SNAP) encapsulation over ATM per RFC 1483
Ethernet Interface:	10 Mbps half duplex
Bridging:	<ul style="list-style-type: none"> - LLC encapsulation of Ethernet packets to/from the ATM interface - LLC duplication supported (for frames whose source MAC address and destination MAC address are the same, learns address, but does not forward) - Supports learning of up to 14 MAC addresses

5260 Specifications	
Size:	5.5" W x 7" D x 1.5" H (14 cm W x 17.8 cm D x 3.8 cm H)
Weight:	1.25 lb. bridge only (0.57 kg)
Power:	Wall-mount 12 watt AC to DC adapter. 11-18vDC @ 1.1 amp output. AC input to meet country-specific input requirements. - North America: 115 Vac, 60 Hz, 0.2 amp max - Europe: 220 Vac, 50 Hz, 0.1 amp max - Other: 230 Vac, 60 Hz, 0.1 amp max
Temperature:	Operating: 0 to 40 degrees C Non-operating, storage: -10 to 85 degrees C
Humidity:	10% to 90% noncondensing
Ethernet Interface	
Cabling:	Unshielded Twisted Pair (UTP) Category 3, 4, or 5 (IEEE 802.3 Standard Compliant)
DSL Interface	
Connector:	Two-contact, shielded RJ11 (pins 3 and 4) isolation per IEC 950
Operating distance:	18,000 feet max. on standard 26 AWG copper pair wire
5260 Configuration Settings	
ATM Interface:	<ul style="list-style-type: none"> - One Permanent Virtual Circuit supported - F4/F5 loopback cells supported - Multiprotocol over ATM AAL5 (MPOA) per RFC 2684 Multiprotocol encapsulation over ATM Adapter Layer 5 - Logical Link Control (LLC)/Subnetwork Access Protocol (SNAP) encapsulation over ATM per RFC 1483, Mutiprotocol encapsulation over ATM Adapter Layer 5
Ethernet Interface:	10 Mbps half duplex
Bridging:	<ul style="list-style-type: none"> - LLC encapsulation of Ethernet packets to/from the ATM interface - LLC duplication supported (for frames whose source MAC address and destination MAC address are the same, learns address, but does not forward) - Supports learning of up to 255 MAC addresses



Efficient Networks, Inc.

Corporate Headquarters

4849 Alpha Road
Dallas, Texas 75244

1+972-852-1000 PHONE
1+972-852-1001 FAX

info@efficient.com EMAIL

U.S. West Coast

983 University Avenue, Building A
Los Gatos, California 95032

+1-408-357-6600 PHONE
+1-408-357-6601 FAX

Europe B.V.

Parc Centre
Boeing Avenue 8
1119 PB Schiphol-Rijk
The Netherlands

+31 (0)20 655 60 60 PHONE
+31 (0)20 655 60 65 FAX
europa@efficient.com EMAIL

Asia Pte Ltd.

Level # 19-05 Suntec Tower Two
No. 9 Temasek Boulevard
Singapore 038989

+65 3385855 PHONE
+65 3385860 FAX
asiapac@efficient.com EMAIL

www.efficient.com

©2000 Efficient Networks, Inc. All rights reserved. Efficient Networks, its logos, and SpeedStream are registered and unregistered trademarks of Efficient Networks, Inc. All other brand names and trademarks are held by their respective companies. Efficient Networks reserves the right to make changes to product specifications at any time without notice.